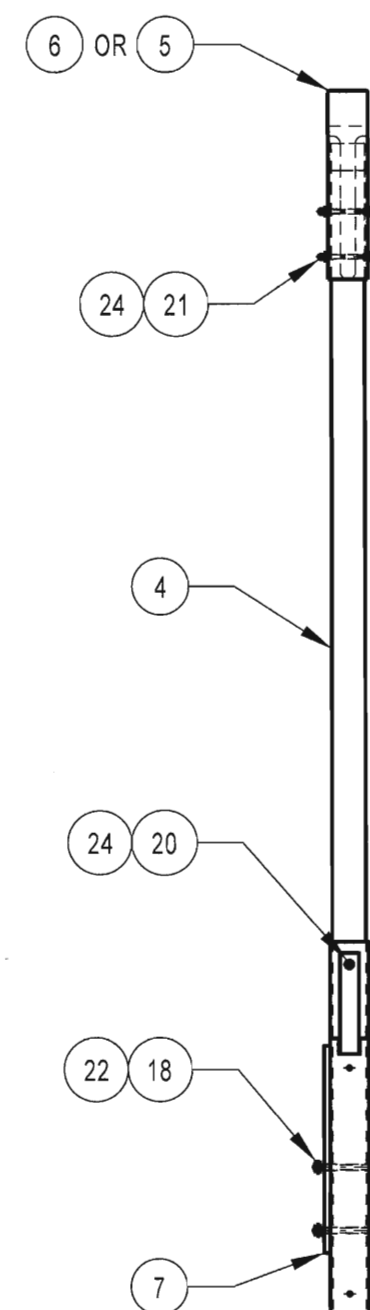
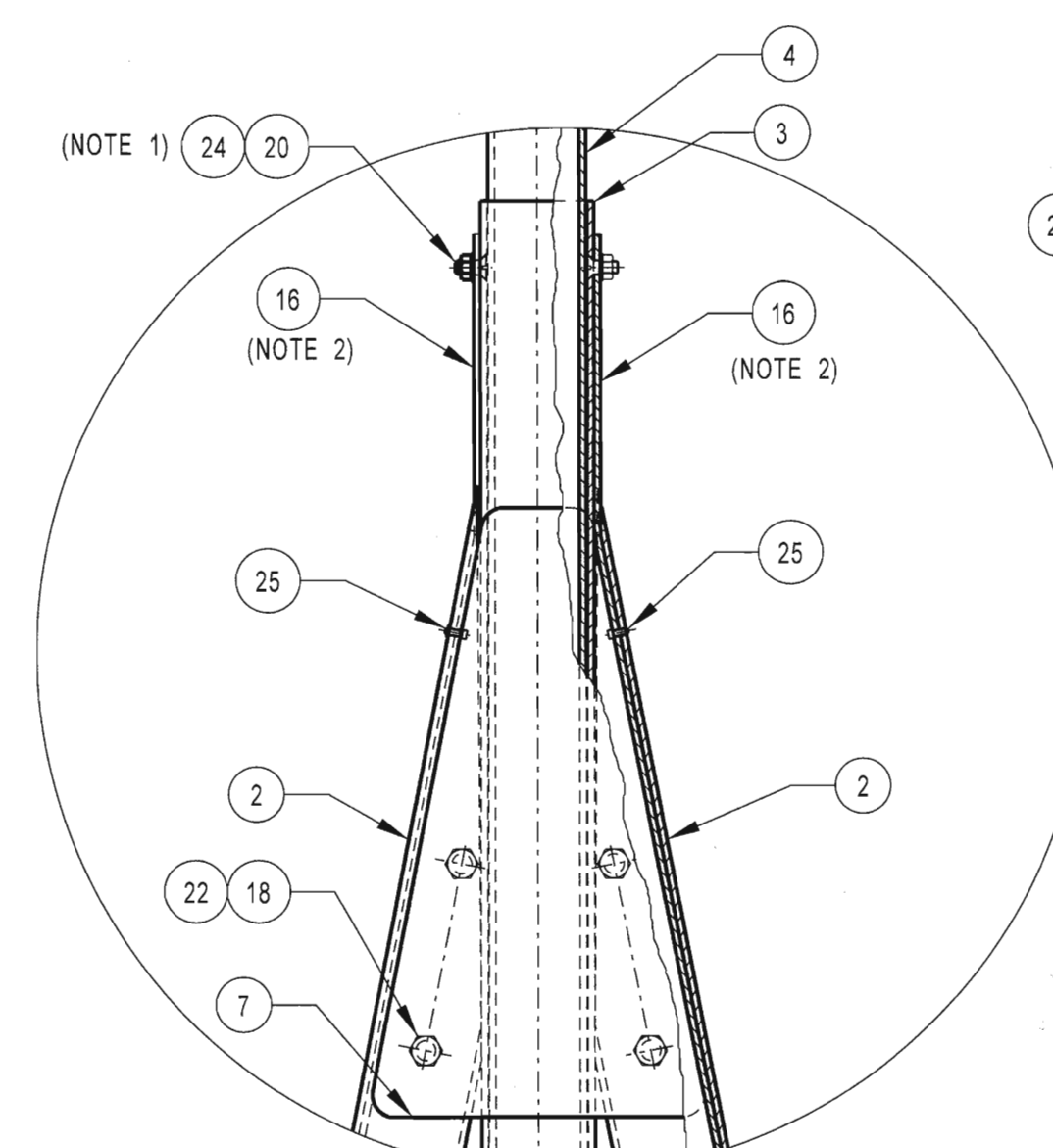


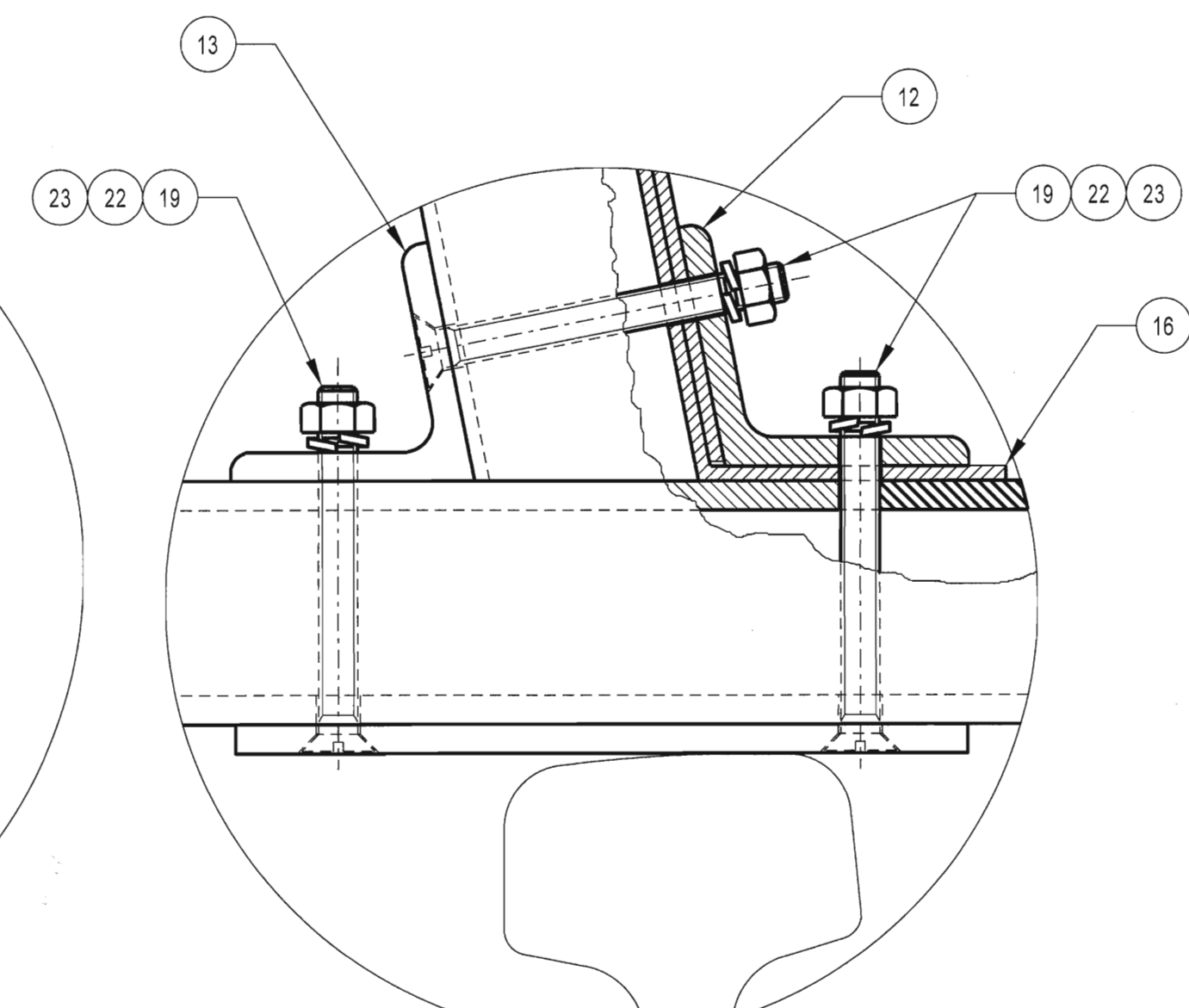
DETAIL 'A'



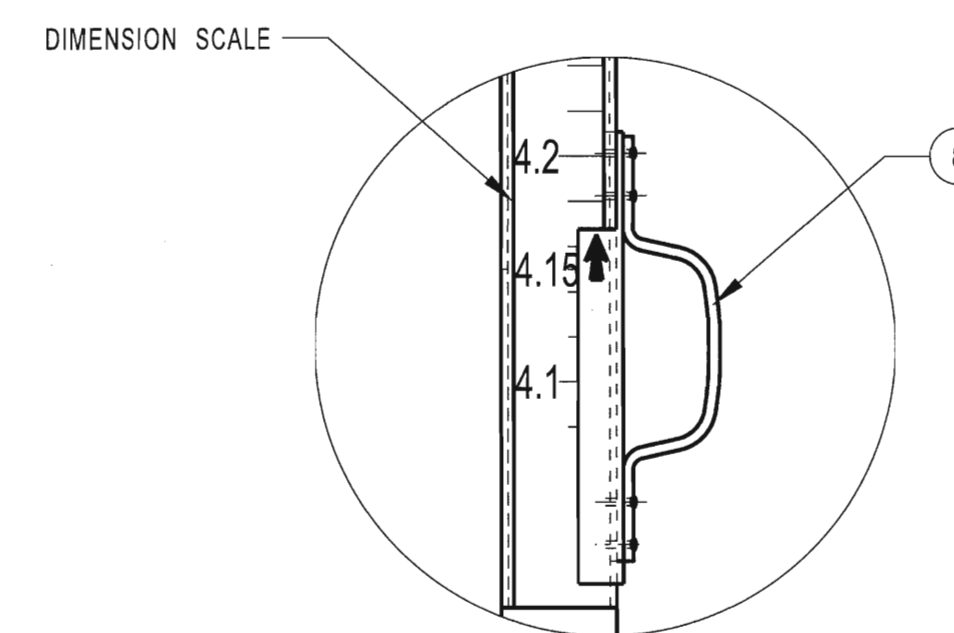
SIDE VIEW  
ITEM 2 NOT SHOWN



DETAIL 'B'



DETAIL 'C'



DETAIL 'D'

- NOTES
1. EARTH STRAPS TO BE SECURED TO TOP OF MIDDLE LEG BEFORE INSERTING INSIDE SLIDE.
  2. EARTH STRAP TO BE RIVETED TO INSIDE OF BOTH STABILIZING LEGS AT 300mm INTERVALS.
  3. THE FRAMES MUST ALL BE CLEARLY MARKED WITH THE FOLLOWING:
    - MANUFACTURERS NAME.
    - DATE OF MANUFACTURE / SERIAL NUMBER.
    - TRANSNET APPROVED IN TERMS OF TECHNOLOGY MANAGEMENT
  4. THIS DRAWING IS TO BE READ IN CONJUNCTION WITH SPEC NO, BBB0868

\* AS REQUIRED

ITEM NO	DESCRIPTION	QTY	STORES ITEM NO	DRAWING NO
25	RIVET, STAINLESS STEEL, BLIND, POP TYPE (POP RIVET)	*	-	-
24	WASHER, STEEL, FLAT, GALV, ROUND, M6	4	-	-
23	WASHER, LOCK, STEEL, SINGLE COIL, SQUARE SECTION, M8	20	-	-
22	WASHER, STEEL, FLAT, GALV, ROUND, M8	20	-	-
21	SCREW, STEEL, GALV, CS HEAD, SLOTTED, M6 x 70 LONG	2	-	-
20	SCREW, STEEL, GALV, CS HEAD, SLOTTED, M6 x 25 LONG	2	-	-
19	SCREW, STEEL, GALV, CS HEAD, SLOTTED, M8 x 80 LONG	12	-	-
18	BOLT AND NUT, STEEL, GALV, HEX, HEAD, M8 x 80 LONG	8	-	-
17	NYLON '66' BLOCK, STOPER, SIMILAR OR EQUAL APPROVED.	1	-	BBB4353 ITEM 9
16	EARTH STRAP, 25 x 3 x 3 06SL (SEE NOTES)	2	-	-
15	MIDDLE LEG, LEFT BRACKET, ALUMINIUM	1	-	BBB4353 ITEM 6
14	MIDDLE LEG, RIGHT BRACKET, ALUMINIUM	1	-	BBB4353 ITEM 7
13	STABILIZING LEG, INSIDE BRACKET, ALUMINIUM	2	-	BBB4353 ITEM 5
12	STABILIZING LEG, OUTSIDE BRACKET, ALUMINIUM	2	-	BBB4353 ITEM 4
11	MIDDLE STIFFENER	1	-	BBB4353 ITEM 2
10	RAIL STOPPER	1	-	BBB4353 ITEM 8
9	STIFFENER BRACKET	2	-	BBB4353 ITEM 1
8	LIFTING HANDLE ASSEMBLY	1	-	BBB4351
7	BRACKET	2	-	BBB4353 ITEM 10
6	25kV AC STAGGER GAUGE HEAD	1	-	BBB4350
5	3kV DC STAGGER GAUGE HEAD	1	-	BBB4349
4	INSIDE SLIDE	1	-	BBB4348
3	MIDDLE LEG	1	-	BBB4347
2	STABILIZING LEG	2	-	BBB4346
1	BASE	1	-	BBB4345

© COPYRIGHT PROTECTED. PREPARED BY CENTRAL DRAWING OFFICE

DIMENSIONS : mm SCALE : 1 : 10  
 TOLERANCE : LIN ± 2 ANG ± 0.5° ITEM NO : 3kV DC - 54033635  
 MATERIAL : 25kV DC - 54033623  
 VERSION INFO : FRAME REPLACED WITH TRANSNET FRAME.  
 DRAWING UPDATED.

DO REF : CDO/9113  
 ECP REF :  
 DRAWN : SM MAZIBUKO  
 DESIGNED :  
 CHECKED : DA BALLABIO

09/07/2018  
 APPROVED  
 09/07/2018  
 AUTHORISED

HEIGHT AND STAGGER GAUGE  
 3kV DC AND 25kV AC ELECTRIFICATION

**TRANSNET**  
 freight rail  
 CEE-TWE-0002  
 VERSION 4